

## ASSEMBLY INSTRUCTIONS – No. 1804 Three-tier Tire Rack

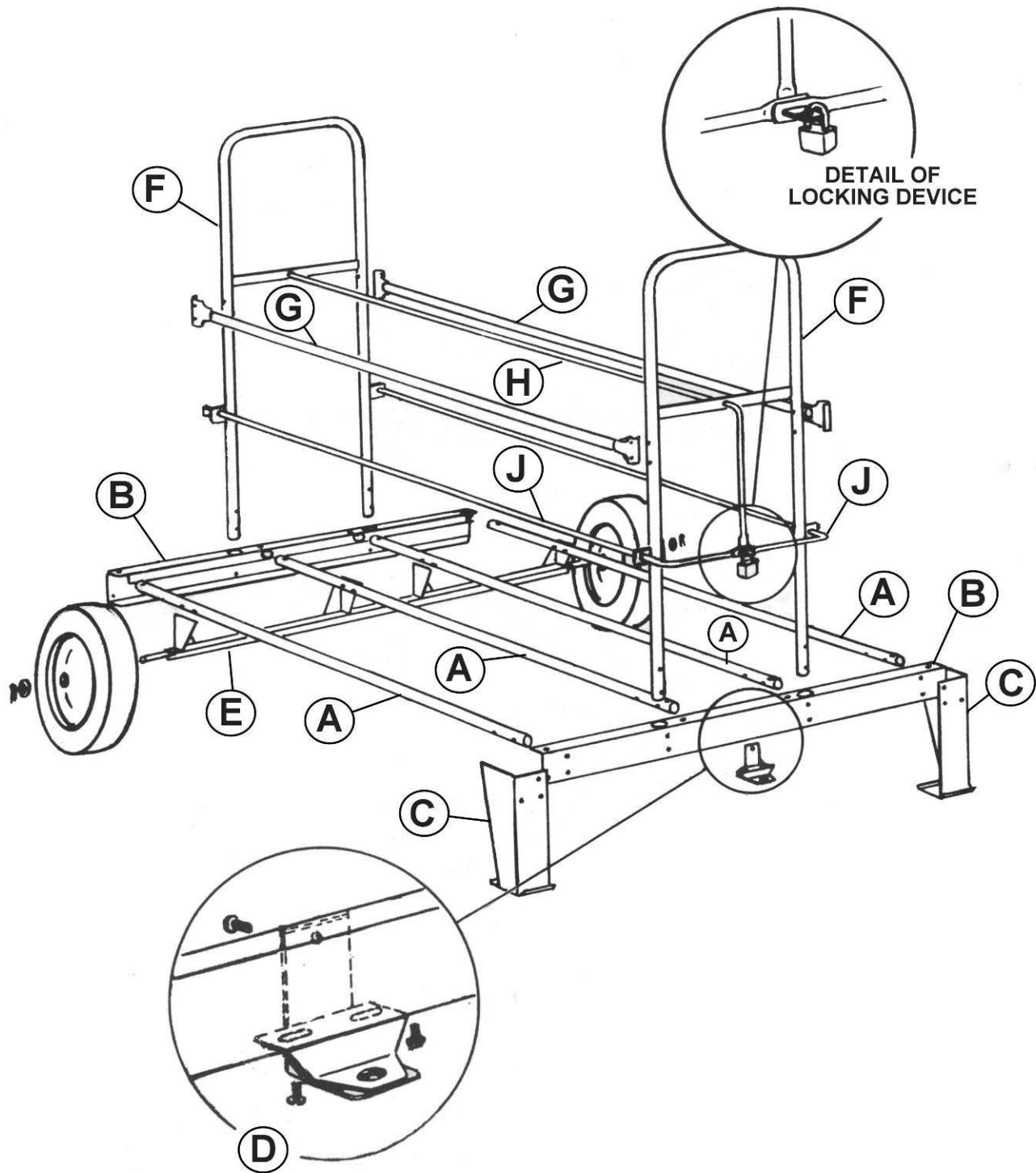
CAUTION: Do not discard shipping container until assembly is complete; this will avoid unnecessary loss of parts.

### READ THROUGH THESE INSTRUCTIONS ONCE BEFORE BEGINNING ASSEMBLY – THEN PROCEED

- (1) Insert ends of the four Tire Rails (A) into the four large holes in the vertical flange on each of the End Channels (B). **MAKE SURE RAILS ARE ASSEMBLED SO THAT ALL INTERMEDIATE HOLES NEAR EACH END ARE IN LINE.** Leave nuts slightly loose at this time.
- (2) Attach Legs (C) to one end of the assembly completed in Step (1). At each corner use two long bolts through the slotted holes in each leg and the corresponding pair of holes in outside Tire Rails, and three short bolts through the Channels. Leave nuts slightly loose at this time.
- (3) At the end where you have attached the Legs, fasten Lift Tongue (D) at center of Channel. Use two short bolts up from below into the lower flange of the Channel and another short bolt through the vertical flange. These nuts should be tightened securely.
- (4) At the opposite end of rack, attach Axle Assembly (E) to the four lower Rails with eight bolts and nuts, leaving nuts slightly loose. **MAKE SURE THIS ASSEMBLY IS ATTACHED WITH THE TAPERED SUPPORT PLATES POSITIONED AS SHOWN IN DRAWING.**
- (5) Insert ends of Frames (F) into holes in top of End Channels. Fasten each with four long bolts and nuts, leaving nuts slightly loose.
- (6) Attach Clamp Rails (G) with two long bolts and nuts at each end. **NOW TIGHTEN ALL NUTS,** including those left loose previously.
- (7) Place a Wheel over each end of Axle, making sure the grease fittings are to the outside. Apply a washer and cotter pin at each end.
- (8) After display tires have been placed on rack, attach Locking Bars as follows:

Insert flat end of Upper Bar (H) through keyhole at rigid end of rack, then run through center of upper row of tires and corresponding keyhole at opposite end. Let the Bar drop so the bent end is approximately vertical. Now insert the Lower Bars (J) in the same manner through lower rows of tires. Rotate these Bars so the slots can be pushed over the bent end of Upper Bar. Now secure with padlock.

In use, make sure to apply occasional lubrication to grease fittings on wheels and check for security of all fasteners. **SAVE THESE INSTRUCTIONS FOR REFERENCE IF YOU NEED TO ORDER REPLACEMENT PARTS AT A LATER DATE.**



In case of parts shortages or defects, describe missing or defective part by the name and letter used in these instructions, and report to the manufacturer:

WARREN STEEL SPECIALTIES CORPORATION  
 P.O. BOX 1391 Warren, OH 44482  
 (330) 399-8360